



Mule Studio

Mateo Almenta Reca
Director, Product Management

Agenda

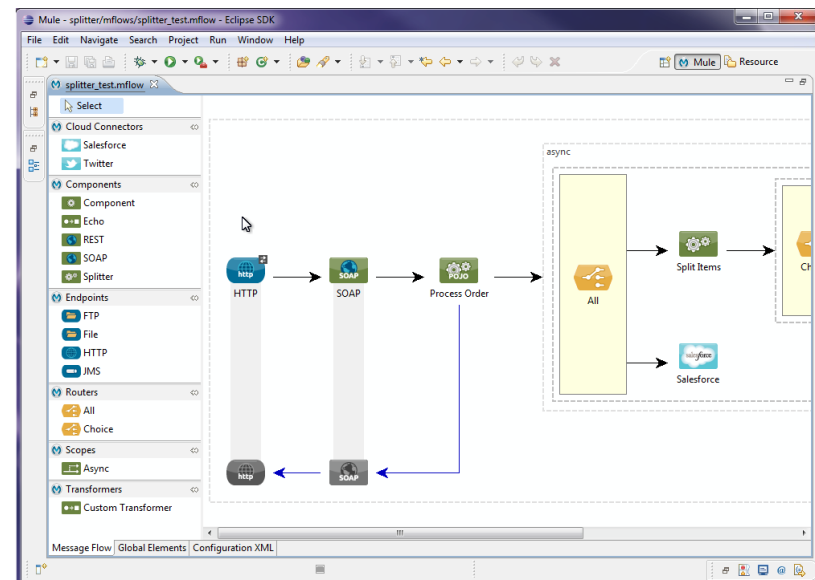


Mule Summit 2011
Integration at cloud speed

- ▶ Overview
- ▶ Demo
- ▶ Availability



- ▶ Graphical design tool for Mule ESB
- ▶ Quickly design, test and run Mule Flows
 - Drag and drop environment
 - No XML required
 - Eases learning curve
- ▶ No new tools or retraining
 - 100% Eclipse-based
 - Integrates with Maven projects



2- way editing support



Mule Summit 2011
Integration at cloud speed

- ▶ Faster development for experience Mule users
- ▶ Not a black box: Move back and forth between graphical representation and XML
- ▶ No need to choose between ease of use and control

The image shows two windows from the Mule Studio application. The top window displays the XML configuration for a message flow named 'order_management.mflow'. The XML includes various components such as 'HTTP Connector', 'Message Enricher', 'JMS Outbound Endpoint', 'Choice Router', and several 'Processor-Chain' blocks with 'When' expressions and 'Then' actions like 'Split Items' and 'Salesforce'. The bottom window shows the graphical representation of the same message flow. It features an 'HTTP' connector on the left, followed by a 'SOAP' connector, a 'Process Order' component, an 'All' router, and a 'Split Items' component leading to a 'Salesforce' connector. A large grey arrow points from the XML view down to the graphical view, and another large grey arrow points from the graphical view back up to the XML view, illustrating the bidirectional editing capability.



- ▶ Make it easier for the end user
- ▶ User does not need to understand Mule Concepts to model a message flow
- ▶ Single step installer experience
- ▶ Single package download
 - Mule ESB embedded
 - Eclipse



Demo



► Schedule

- Private Beta – ~~March~~
- Public Beta – ~~May~~
- BM5 – Mid October
- GA - Mid November

Try it now

[http://www.mulesoft.org/
studio](http://www.mulesoft.org/studio)

► Next Release

- Data Mapper
- Visual Debugging
- Team Collaboration



Questions?

2.0 roadmap and beyond



Mule Summit 2011
Integration at cloud speed

- ▶ Expression builders
- ▶ Git support
- ▶ Multiple Sources
- ▶ Add notes to a flow diagram (Post It)
- ▶ Event Tracking (custom events)
- ▶ **Data Mapper integration (high priority)**
- ▶ Print and Report
- ▶ Support for request/reply
- ▶ Transaction demarcation
- ▶ High-level "bird's eye" view showing how flows interact (read-only)
- ▶ Support exception handling
- ▶ Visual Flow Debugging
- ▶ Deployment Profiles (Env promotion)

